



## **ENERGY SAVINGS ANALYSIS REPORT OF ARTIKOOL ON 1TR NATIONALPANASONIC ACU**

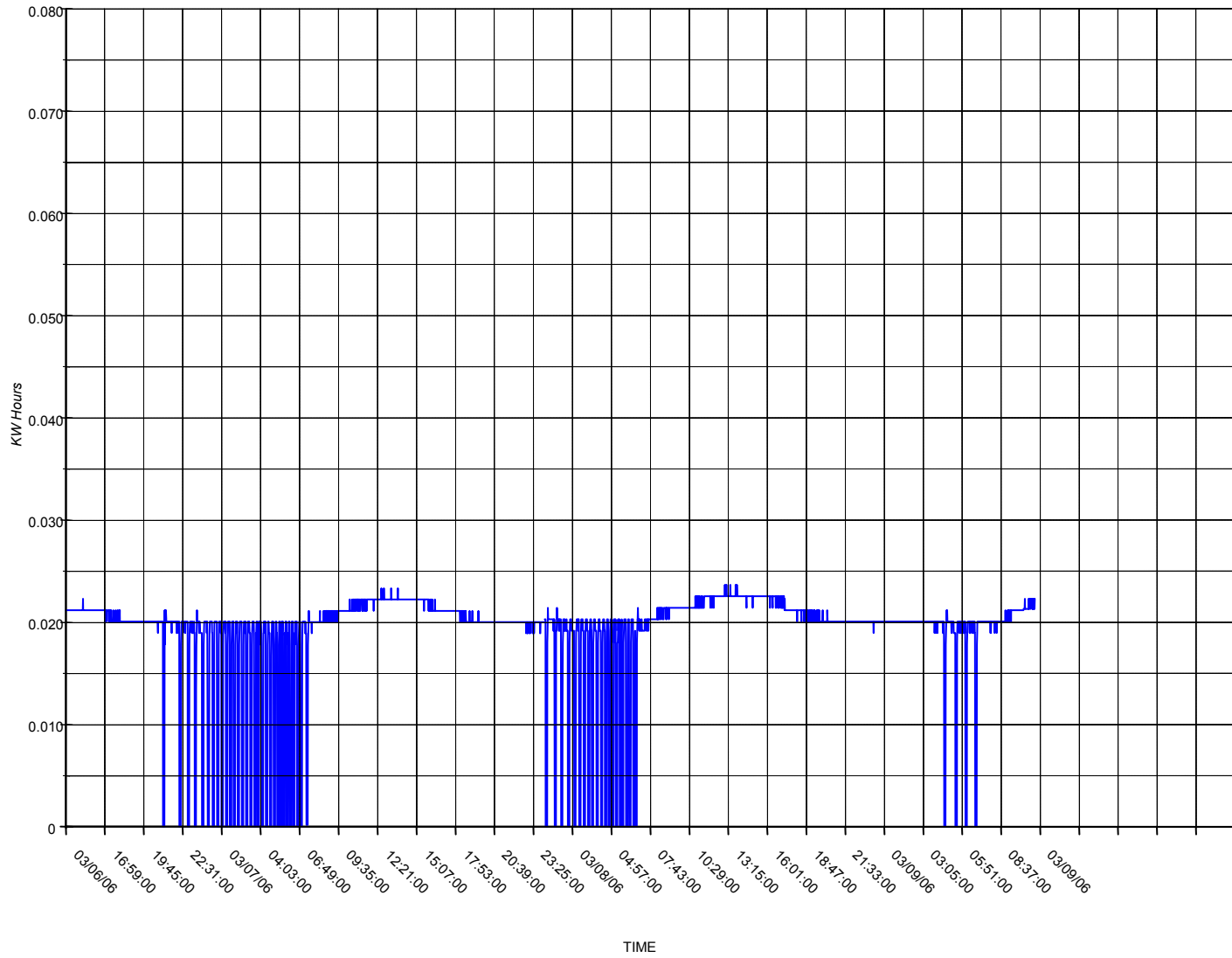
Independent research shows that lubricant build-up on refrigeration system's internal surfaces can degrade its performance by up to 30% preventing it from transferring heat, increasing pressure drops, elevating boiling points, and reducing its latent heat capacity. Over time, this continuous loss of cooling capacity escalates your power bills, maintenance and capital costs as the system's efficiency degrades. But Artikool's ability to accelerate the heat-transfer process through metallurgical thermodynamics and metal-surface chemistry helps you maintain the peak performance that keys to minimizing your long-term operating costs.

The following is a summary of the Energy Saving Performance of Artikool which was installed on one of your 1TR Air Conditioning Unit from March 6 to 30, 2006. Using a monitoring device, Elite Pro which was made in Oregon, USA, we monitored the Energy Consumption (kWh Consumption) and behavior of this particular Air Conditioning Unit for three consecutive days without Artikool (March 6 to 9, 2006) then three consecutive days monitoring again after two weeks upon injection of Artikool which actually takes effect within this period (March 27 to 30, 2006). The statistical analysis concludes that not only does the Artikool delivers an electric consumption reduction but significant and meaningful reductions in compressor runtime was achieved which should have the additional benefit of extending the life expectancy of the compressor. This reduced operation was achieved while providing a more consistent and predictable temperature performance. Application of Artikool technology is an excellent business decision which can deliver real and meaningful operating cost reductions.

<b>1TR NATIONAL ACU</b>	<b>without Artikool</b>	<b>with Artikool</b>	<b>Savings</b>
Energy Consumption	69.4kWh	58.0 kWh	<b>16.43%</b>
Compressor Runtime	62.58 hours	47.27 hours	<b>24.46%</b>

1TR National Panasonic ACU without Artikool

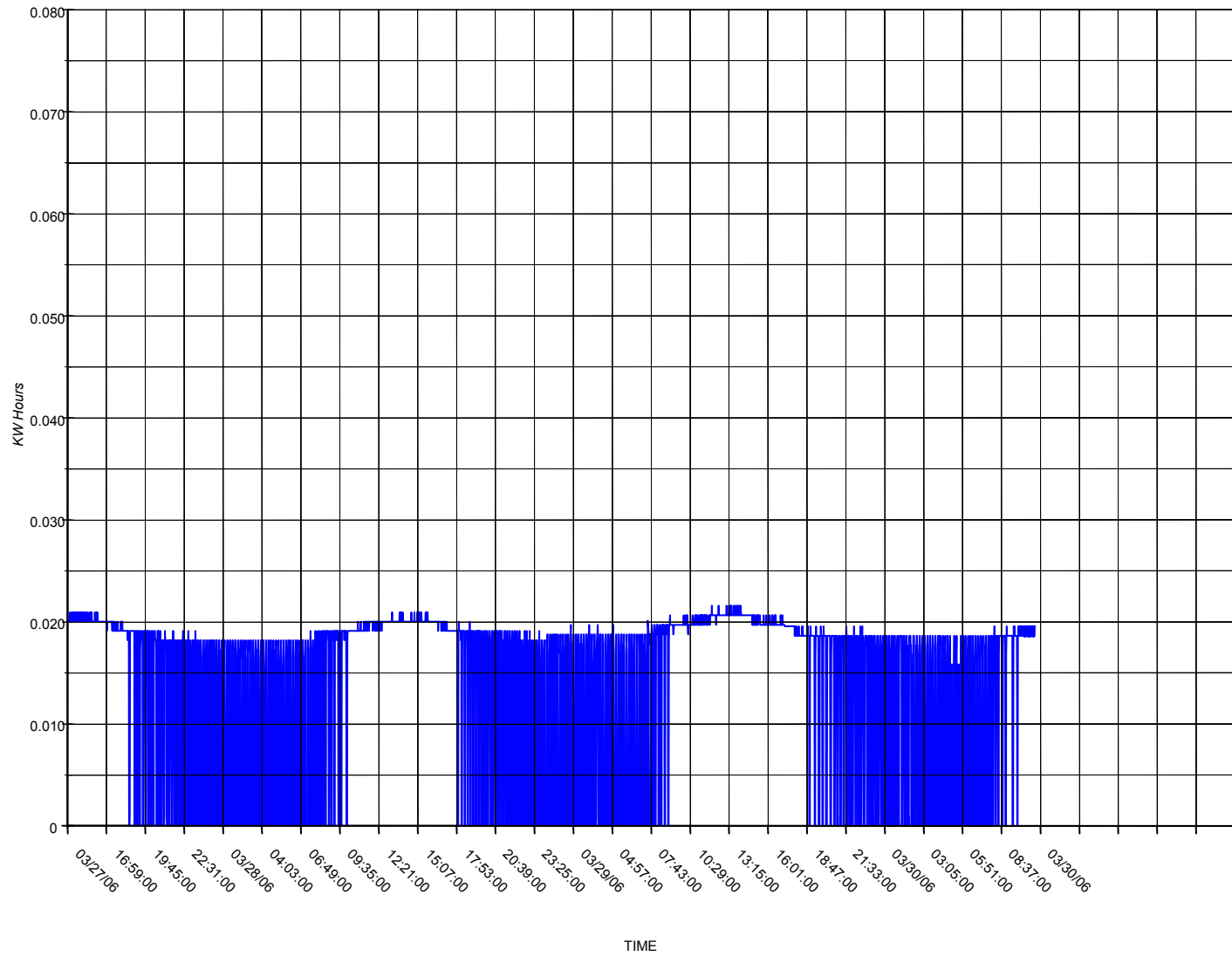
03/06/06 (2:13 PM) - 03/09/06 (11:17 AM)



Average: 0.017  
Minimum: 0.000  
Maximum: 0.024  
Accumulated Energy Consumption: 69.4 kWh  
Compressor Runtime: 62.58 hrs.

1TR National Panasonic ACU with Artikool

03/27/06 (2:13 PM) - 03/30/06 (11:17 AM)



Average: 0.014

Minimum: 0.000

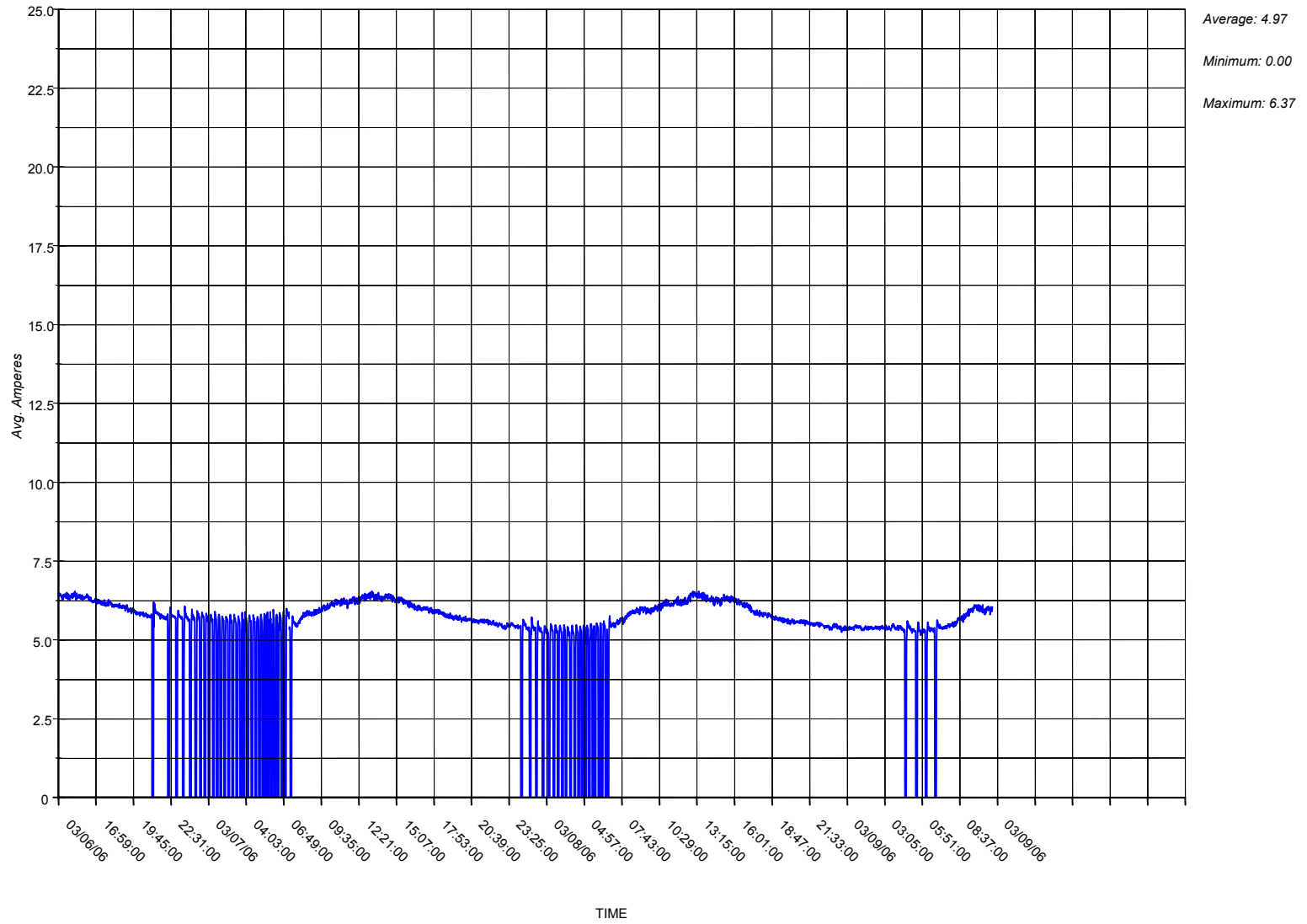
Maximum: 0.069

Accumulated Energy  
Consumption: 58.0 kWh

Compressor Runtime: 47.27 hrs.

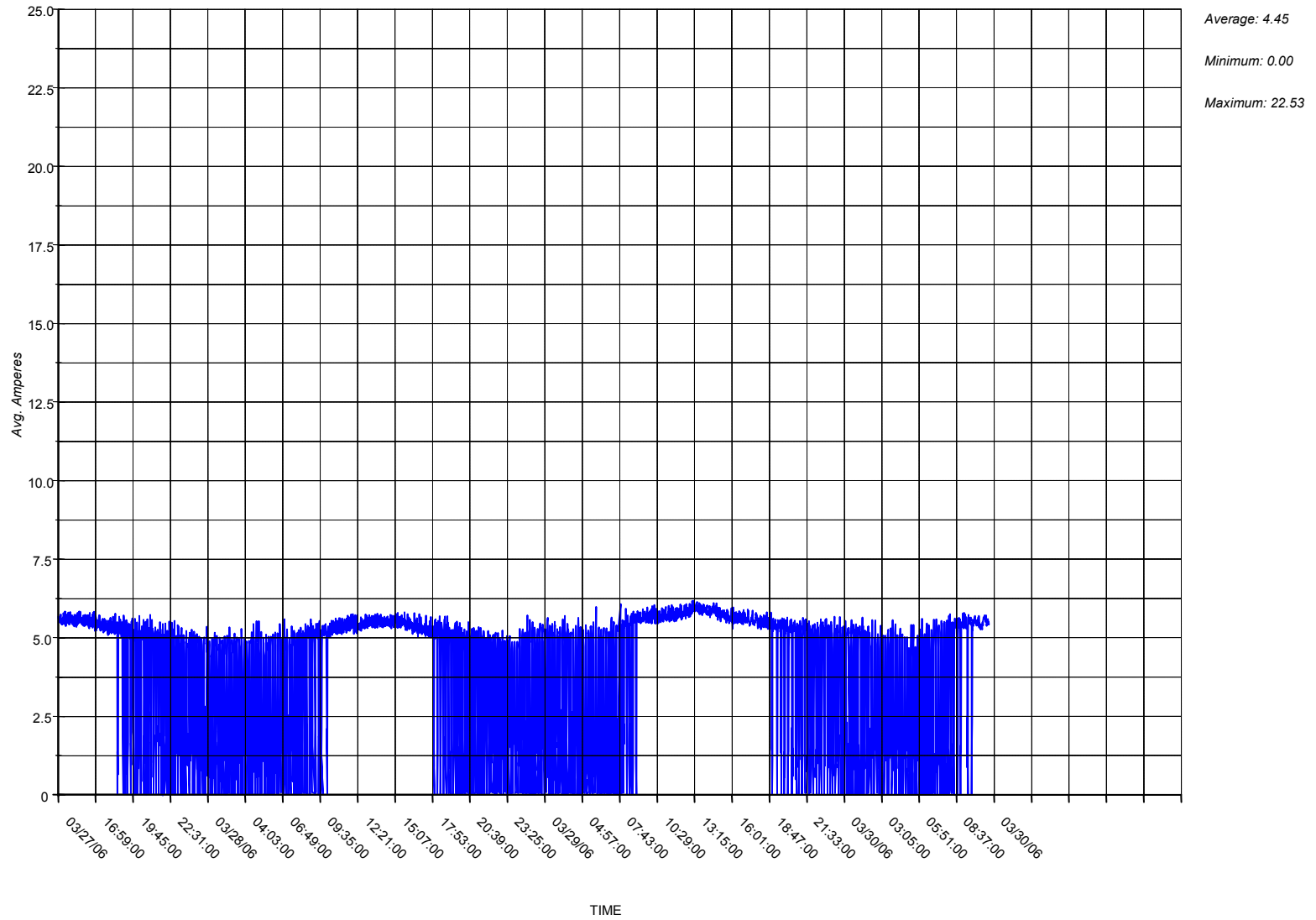
1TR National Panasonic ACU without Artikool

03/06/06 (2:13 PM) - 03/09/06 (11:17 AM)



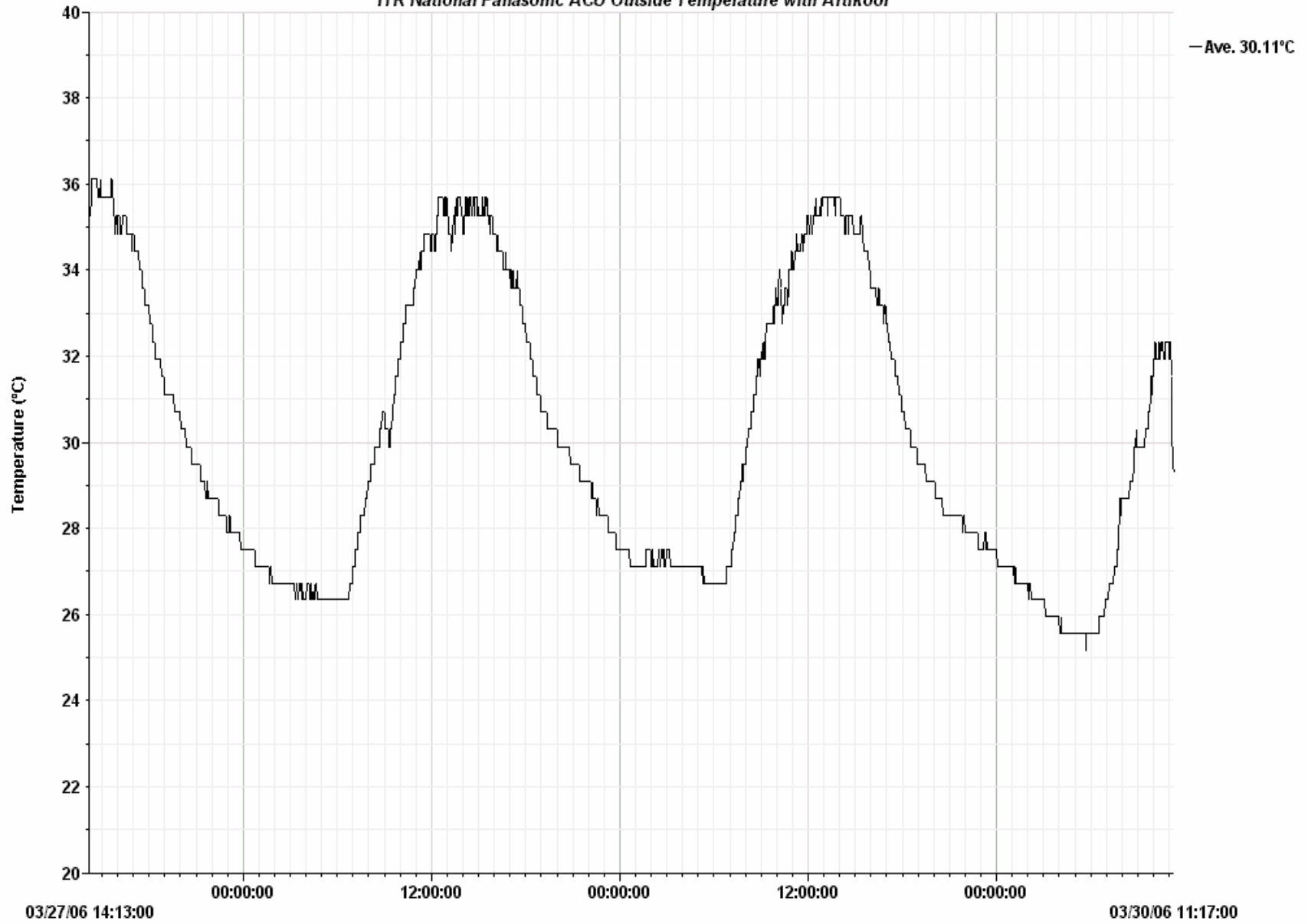
1TR National Panasonic ACU with Artikool

03/27/06 (2:13 PM) - 03/30/06 (11:17 AM)

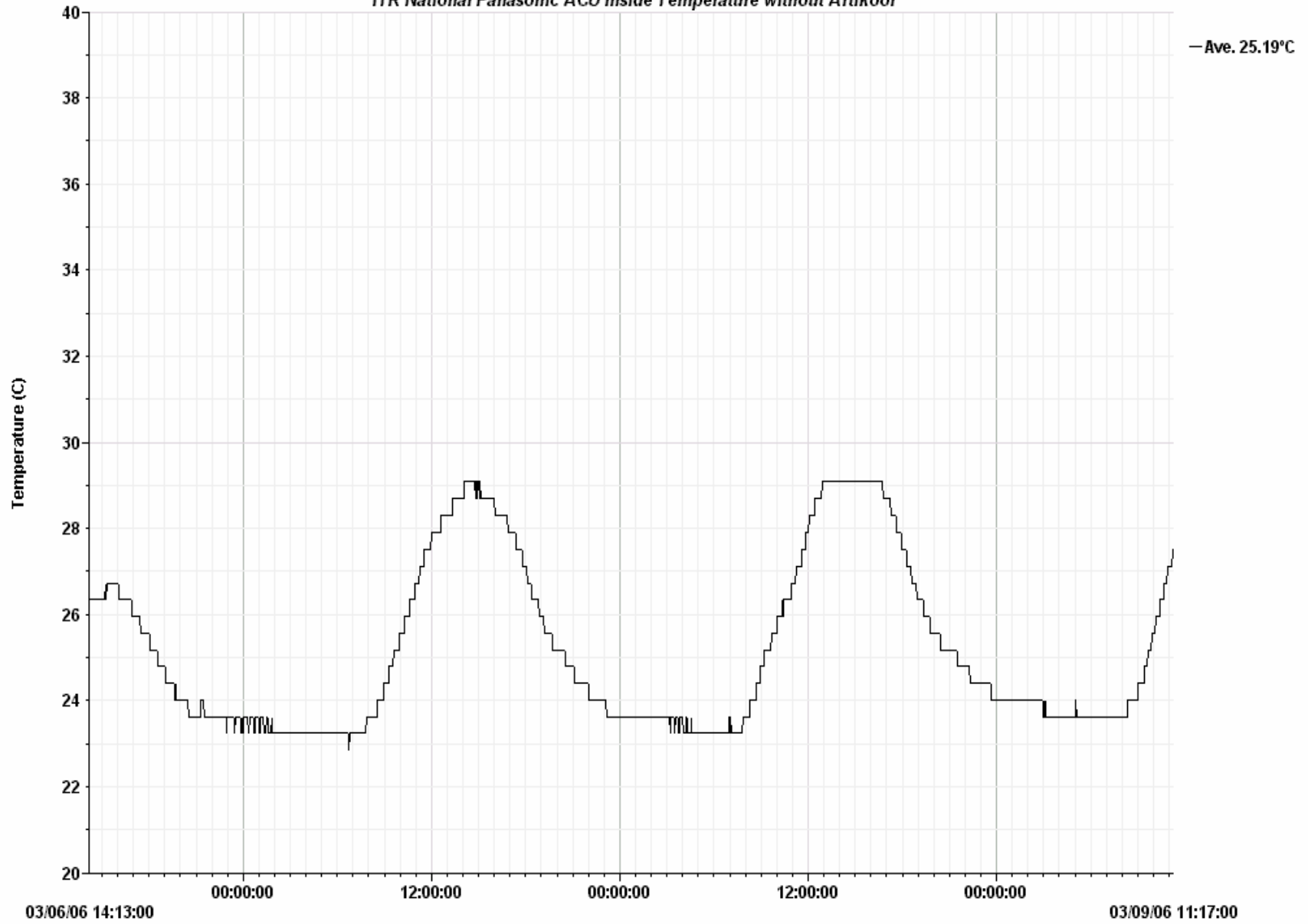




1TR National Panasonic ACU Outside Temperature with Artikool



1TR National Panasonic ACU Inside Temperature without Artikool





1TR National Panasonic ACU Inside Temperature with Artikool

